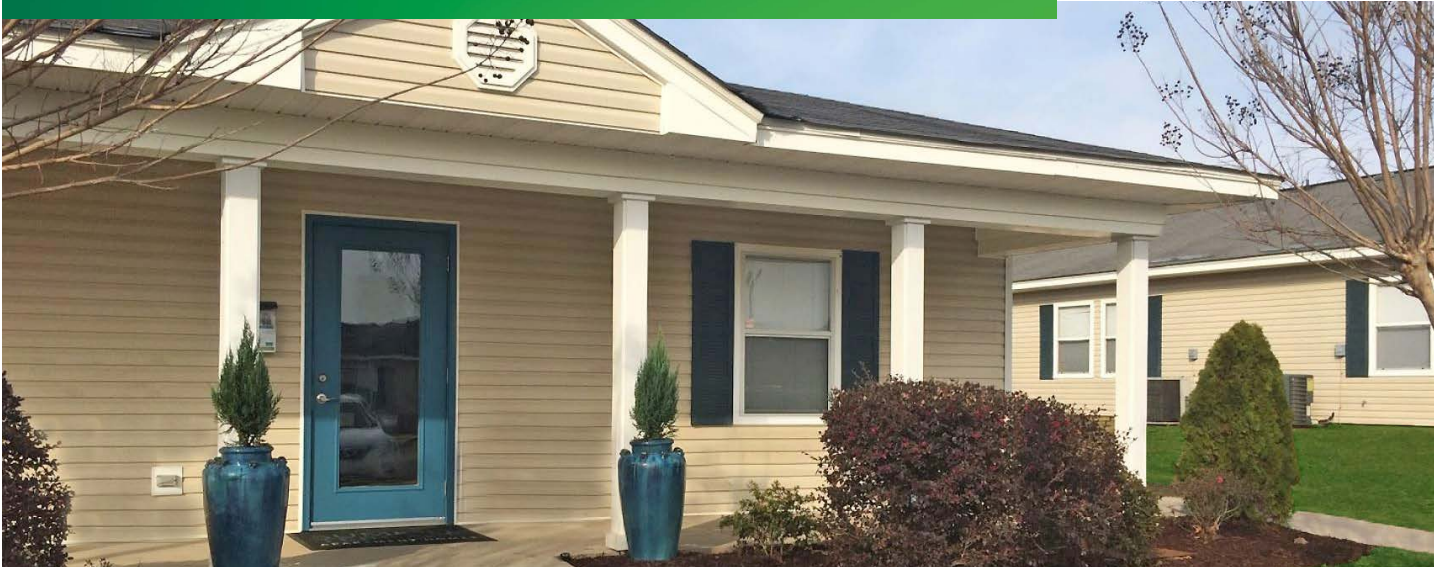


FOR SALE

SUMMIT TERRACE

2002 SUMMIT PARKWAY
PRATTVILLE, AL 36066



PROPERTY DESCRIPTION

SUMMIT TERRACE | 56 UNITS | \$4,784,920

CBRE Affordable Housing is pleased to announce for sale Summit Terrace, a 56-unit affordable property located in Prattville, AL. This property is currently entering the Qualified Contract process.

- Section 42 Low Income Housing Tax Credit (LIHTC) property, placed into service 1997
- Buyer may obtain new financing
- Located just 15 minutes outside of Montgomery, AL
- Property is located minutes from Highway I65 and I82 with easy access to shopping, restaurants, golf courses, and prime medical facilities
- Ideally situated within minutes of stores such as Target, Kohl's, Publix Super Market and favorite dining spots like Olive Garden, Longhorn Steakhouse, Chick-fil-A, and Chipotle



UNIT MIX

UNIT MIX		
1 bedroom	18 units	550 sq ft
1 bedroom	20 units	725 sq ft
2 bedroom	18 units	975 sq ft

Capital Markets | Investment Properties

CBRE

AERIAL MAP





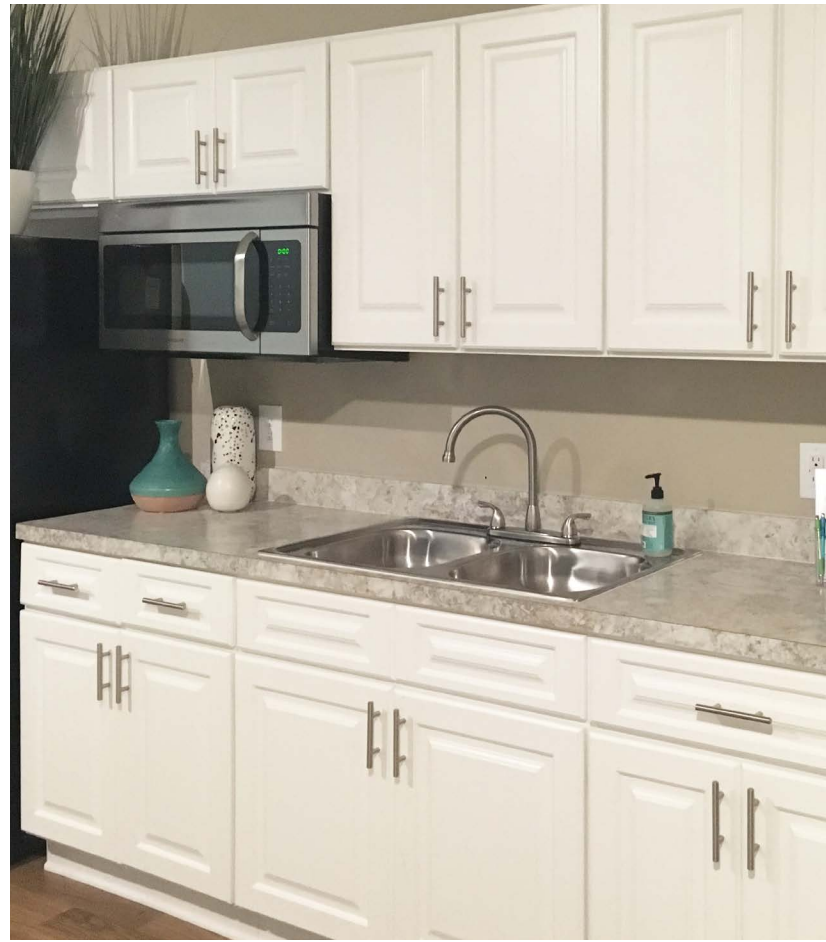
COMMUNITY AMENITIES

- Spacious kitchens
- Private patio
- Washer & dryer connections
- Storage space
- Ceiling fans
- Central heat and air
- Cable ready

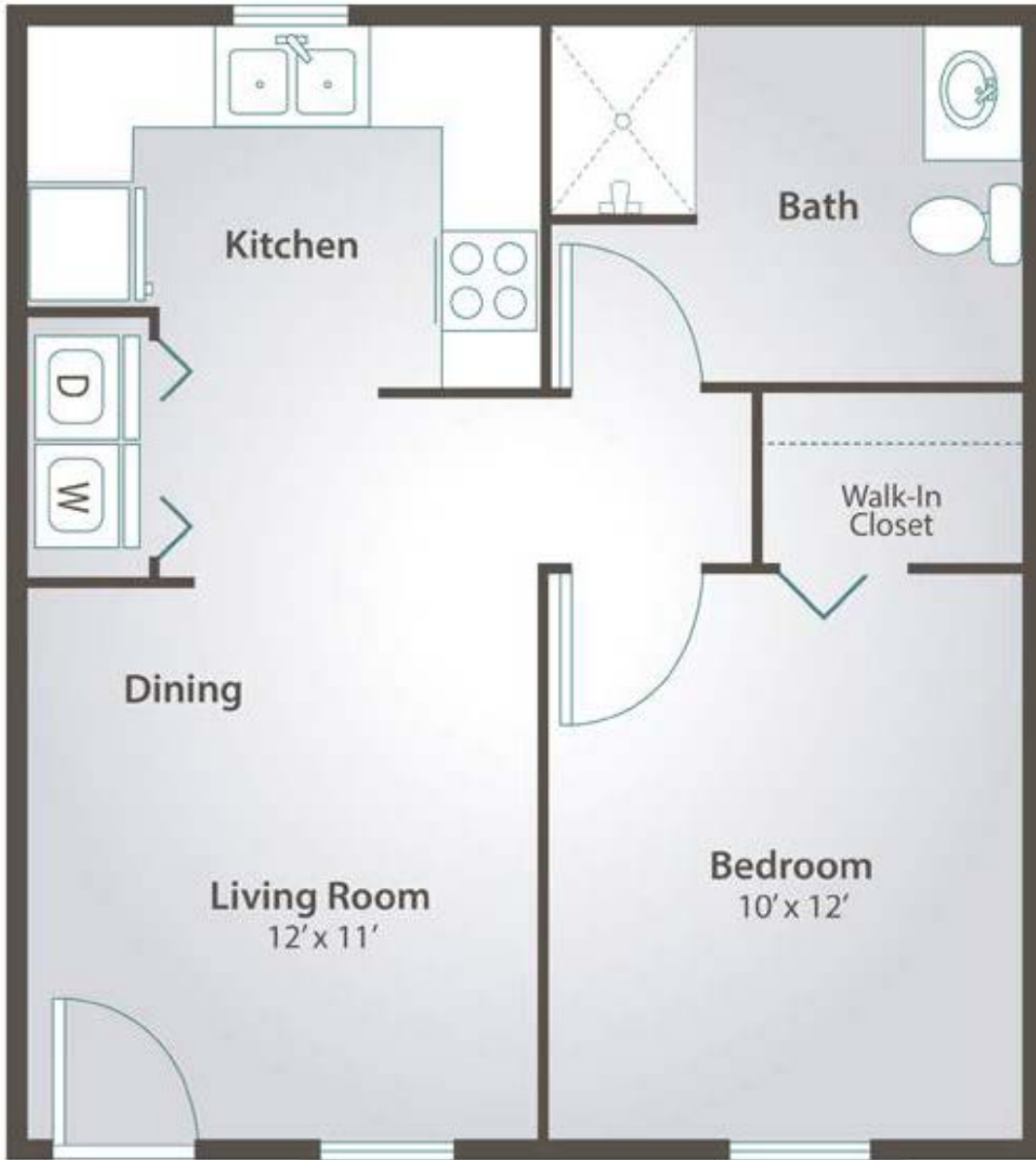


UNIT AMENITIES

- Gazebos
- Lakeside views
- Clubhouse
- Alarm systems
- 24-hour emergency maintenance
- Courtyard design



FLOOR PLANS



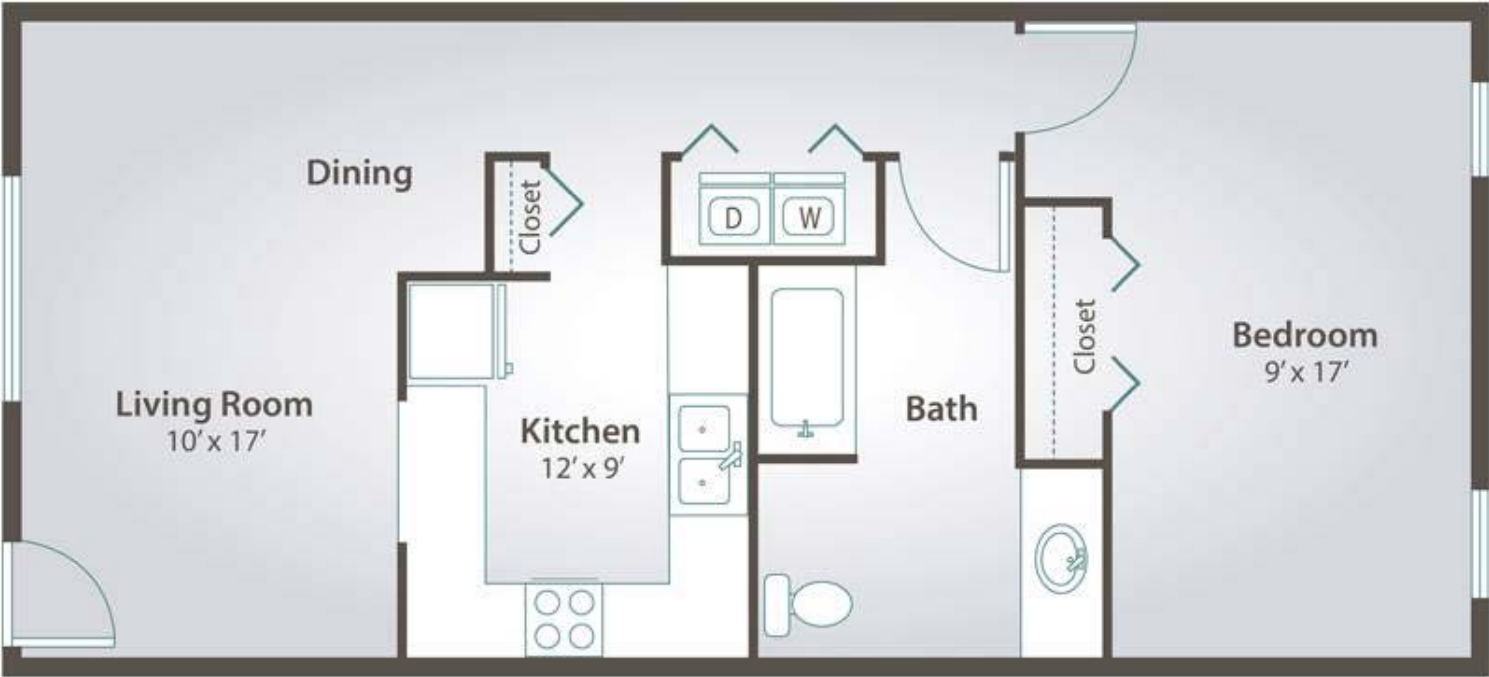
**ONE BEDROOM | ONE BATH
550 SQUARE FEET**

FLOOR PLANS



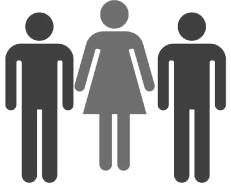
**TWO BEDROOM | TWO BATH
975 SQUARE FEET**

FLOOR PLANS



**ONE BEDROOM | ONE BATH
725 SQUARE FEET**

Demographics



City-Data.com estimates that since 2000 Prattville's population has grown by 45.3%

City of Prattville	35,317
Montgomery MSA	374,536

Location



Prattville is conveniently located less than 15 miles from Montgomery, the state capital, and the second largest city in Alabama



FOR MORE INFORMATION, PLEASE CONTACT THE LISTING BROKERS BELOW:

CBRE AFFORDABLE HOUSING
1420 FIFTH AVENUE, SUITE 1700
SEATTLE, WA 98101

JEFF KUNITZ

+ 1 206 826 5778
LIC. 87462
JEFF.KUNITZ@CBRE.COM

THE KIRKLAND COMPANY
5141 VIRGINIA WAY, SUITE 320
BRENTWOOD, TN 37027

WILLIAM KIRLAND

+ 1 615 690 3006
LIC. 000080479
WILLIAM.KIRKLAND@THEKIRKLANDCO.COM

FOR UNDERWRITING QUESTIONS, PLEASE CONTACT:

TO SCHEDULE YOUR TOUR OF THE PROPERTY, PLEASE CONTACT: